

Name: \_\_\_\_\_

Date: \_\_\_\_\_

# Teacher Sheet: Using Plant Field Guides

✓Nestlings  
✓Fledglings

*As you search through the field guide, answer the following questions.*

**This guide is arranged into how many major plant groups?**      *5 major groups*

**On what pages would you find the following plant groups (families)?**

**1. Lichens:** *248-255*      **2. The Asteraceae Family:** *47-83*      **3. Ferns:** *24-27*

**What information is provided in the field guide for each species?**

*Plant Pictures, Scientific Names, Common Names, Characteristics, Habitat, Notes on location in Oregon, Similar Species, Native or Non-Native Plant, Identification tips.*

## ***Focus Plant***

**Scientific Name:** *Artemisia tridentate*      **Page in Field Guide:** *56*

**Common Name:** *big sagebrush*

<b>Habitat</b>	<i>Shrublands and juniper and ponderosa pine woodlands with deep soil.</i>
<b>Leaf shape and arrangement</b> See page 268	<i>Narrow, wedge-shaped, grayish green leaves, 3/4 to 2 inches long with three small lobes at the end.</i>
<b>Flower description</b> See page 268 & 269	<i>Many small disk flowers on a narrow spike.</i>
<b>Flowering Time</b>	<i>Flowers August-September</i>
<b>Locations</b>	<i>It is found in the Klamath Basin in shrublands as well as juniper and ponderosa woodlands.</i>
<b>Notes</b>	<i>There are three varieties of big sagebrush and it is likely the most abundant shrub in western North America.</i>

Name: \_\_\_\_\_

Date: \_\_\_\_\_

## Teacher Sheet: Using Plant Field Guides

✓Nestlings  
✓Fledglings

Draw a picture of your focus plant

Name: \_\_\_\_\_

Date: \_\_\_\_\_

# Teacher Sheet: Using Plant Field Guides

✓Nestlings  
✓Fledglings

## Teacher key for positive plant identification

\*non-native species (introduced to the region after European settlement)



Photo by Sean Bryan Smith

**yarrow**  
*Achillea millefolium*



Photo by Sean Bryan Smith

**curl-leaf mountain mahogany**  
*Cercocarpus ledifolius*, *intermontanus*  
variety



Photo by Sean Bryan Smith

**greenleaf manzanita** *Arctostaphylos patula*



© Br. Alfred Brousseau, Saint Mary's College

**rubber rabbitbrush**  
*Chrysothamnus nauseosus*,  
subspecies *albicaulis*

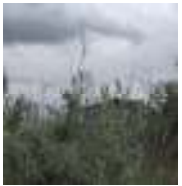


Photo by Sean Bryan Smith

**big sagebrush**  
*Artemisia tridentata*



Photo by Sean Bryan Smith

**squirreltail**  
*Elymus elymoides*,  
subspecies *Brevifolius*



Photo by Sean Bryan Smith

**narrowleaf milkweed**  
*Asclepias fascicularis*



Photo by Sean Bryan Smith

**sulphur buckwheat**  
(also known as sulphur-flower  
buckwheat)  
*Eriogonum umbellatum*,  
*polyanthum* variety



Photo by Sean Bryan Smith

**cheatgrass\***  
*Bromus tectorum*



Photo by Sean Bryan Smith

**stork's bill\***  
(also known as redstem stork's  
bill and filree)  
*Erodium cicutarium*



Photo by Sean Bryan Smith

**mahala mat**  
(also known as prostrate ceano-  
thus)  
*Ceanothus prostratus*



Photo by Sean Bryan Smith

**wetern juniper**  
*Juniperus occidentalis*,  
*occidentalis* variety

Name: \_\_\_\_\_

Date: \_\_\_\_\_

# Teacher Sheet: Using Plant Field Guides

✓Nestlings  
✓Fledglings

## Teacher key for positive plant identification

\*non-native species (introduced to the region after European settlement)



Photo by Sean Bryan Smith

### **basin wildrye**

*Leymus cinereus*



Photo by Sean Bryan Smith

### **bitter cherry**

*Prunus emarginata*



Photo by Sean Bryan Smith

### **yellow sweetclover\***

(also known as white sweetclover)

*Melilotus officinalis*



Photo by Sean Bryan Smith

### **bluebunch wheatgrass**

*Pseudoroegneria spicata*,  
subspecies *spicata*



Photo by Sean Bryan Smith

### **white-stemmed stickleaf**

(also known as whitestem  
blazingstar)

*Mentzelia albicaulis*



Photo by Sean Bryan Smith

### **bitterbrush**

(also known as antelope  
bitterbrush)

*Purshia tridentata*



Photo by Sean Bryan Smith

### **dwarf monkeyflower**

(also known as dwarf purple mon-  
key flower)

*Mimulus nanus*



Photo by Sean Bryan Smith

### **desert gooseberry**

*Ribes velutinum*



Photo by Sean Bryan Smith

### **hot rock penstemon**

(also known as slender penstemon)

*Penstemon deustus*



Photo by Sean Bryan Smith

### **tumble mustard\***

(also known as tall tumble mustard)

*Sisymbrium altissimum*



Photo by Sean Bryan Smith

### **spreading phlox**

(also known as carpet phlox)

*Phlox diffusa*



© Br. Alfred Brousseau, Saint Mary's College

### **ponderosa pine**

*Pinus ponderosa*



Photo by Sean Bryan Smith

### **common mullein\***

*Verbascum thapsus*